

**I-AME**  
Magic Music in Magic Prague  
[www.i-ame.org](http://www.i-ame.org)



# **I-AME**

INTERNATIONAL PARTICIPATION OF TOP ARTISTS  
SOLO CLASSES | CHAMBER MUSIC | YOUTH PROGRAM  
ORCHESTRA | JAZZ MUSIC | FINE ARTS



International Association for Music Education  
**Magic Music in Magic Prague**

July 11 – 20, 2025

Czech Republic, Prague 6 - Břevnov, Jan Hanus Music School

# I-AME 2025 About us



„UNITED IN MUSIC“

*“A Musical Journey into the Magic of Prague...”*

*The International Association for Music Education (I-AME) is an organization dedicated to providing the highest quality music education to students of all ages and abilities. We believe that everyone should have access to the joy of music, and our mission is to bring people from all over the world together to share in the experience. Our summer music events are designed to provide an immersive and inspiring experience for children, future professionals, and amateur musicians alike. Through our unique program, we strive to foster an appreciation and understanding of music, while also providing an opportunity to build relationships, express creativity, and hone skills. We look forward to welcoming you to our summer music events and helping you to reach your musical goals.*



Věra Binarová  
Artistic director  
vera.binarova@i-ame.org



Ada Slivanská  
Executive director  
ada@i-ame.org

With the participation of Czech and world leading artists and educators, we organize a summer music academy for young artists and a music camp for children. We organize a summer festival featuring guests, educators and participants of the academy and camp. We are looking for emerging talented artists, which we present at concerts. Through creative music and art programs, we strengthen the personality and cultural development of the young generation.



The Summer Academy in Prague, Czech Republic “Magic Music in Magic Prague” is a unique educational opportunity to explore the rich cultural heritage of Prague and the Czech Republic, while learning about the history and development of music in the region. Students will take part in lectures, workshops, and performances focusing on music from all over the world. The program is open to all ages, and adapted to the level of the enrolled students. Participants will have the opportunity to experience the city’s vibrant music scene, tour its iconic landmarks and monuments, and explore the many cultural attractions that make Prague so magical.

This year we will be in the heart of Prague, collaborating with the Music School of Jan Hanuš not far from Prague Castle. We will continue to nurture children’s love of music and help them develop their musical talents, with courses focused on improving their skills, training in chamber music, and performing in concerts in the beautiful concert halls and other venues in Prague.

# General Program Overview

We offer a unique, condensed study opportunity. Our artists will engage with you to discuss and review your chosen repertoire, assisting you in overcoming technical challenges. They will provide guidance on the techniques of your instrument and share their thoughts on the musical phrasing of your selected pieces. With piano accompaniment, you will have the chance to prepare for a concert performance.

Additionally, you will have the opportunity to collaborate with fellow students or teachers on interesting chamber music repertoire.

Playing with more advanced artists can be a truly transformative experience. You will learn from their expertise and gain insight into their creative process. You will also witness the passion and energy that goes into creating music.

Collaborating will broaden your appreciation for the power of teamwork, as you work together to create something unique and special. The collective energy of the group will inspire you to create something greater than the sum of its parts. Playing with artists can also challenge you to reach new heights, as you strive to achieve the same level of artistry as those you are playing with.

There are also several master classes, workshops and lectures in the evenings, faculty and students' concerts.

Even though the schedule is very busy, one can find time to visit Prague, one of the most beautiful cities in the world, and enjoy being a tourist for a few hours.



WHAT YOU WILL  
STUDY  
AT I-AME SUMMER  
PROGRAM?



Individual solo lessons

---

Chamber music study and performance

---

I-AME orchestra

---

Program for Young Musicians

---

Jazz / Classics / Improvisation

---

Piano accompaniment

---

Concerts of faculty and participants

---

Or join us as a passive participant

---

# I-AME Music Academy

The program is designed for music professionals or for the students of music. And also, for children, who want to devote themselves to music for all their lives. To all of them our artists want to pass on their experiences. The chamber music is inseparable part of musical life and will accompany you for all your career. Playing in an ensemble you'll learn to react on your colleagues, to harmonize, to create the common phrases. You will play together with the other students and also teachers. And also, you get to learn, that the musical harmony will bring you that human and never-ending friendship. Your study will contain ten plentiful solo lessons. We assume you will participate the lessons of the other students too, because you can learn a lot from their playing as well. The integral part of your study will be also the piano tutoring. It doesn't matter if you are thirty, twenty or ten years old. The most important is the effort to learn something, to get to know, to find out and to get a step closer to fulfil your dreams.

1 400 €



1 200 €

## I-AME Youth Program

Music camp is designed for those, who play on the instrument or sing just for joy and pleasure, the music is for them the free and leisure time activity, which brings them fun and entertainment, but they don't consider it as their future profession. For children, who are up to 14 years old we will provide supervision during the whole stay. Our "aunts" will check the times of lessons, will walk with children to collective program and for the meals (lunches for commuting ones, lunches and dinners for accommodated ones), they will make sure they will be prepared for the lessons and they will invent leisure entertainment. The accommodation is in the dormitory of the conservatory. It is included in the price of the stay. It is possible to commute to the campsite without accommodation, in which case a certain discount will be provided.

Part of international courses I-AME is the program for students, ages 7 - 14 (born after August 1, 2011). Participation of younger child needs to be consulted individually. The program promotes musical and cultural exchanges by involving students from many countries. The Youth Program is designed individually for each child depending on their musical and technical experience. Students are involved in the solo program - individual lessons, chamber music and ensemble playing or orchestra experience. International students could be part of the social events, sport activities or the art program.



YOUTH PROGRAM

Program  
for Young  
Musicians

# Jazz / Classics / Improvisation

Guitar | Drums | Saxophone | Piano | Bass

1 400 €

The jazz / classical / improvising music program is independent courses for jazz players, students, and classical music students interested in jazz and impromptu music. For this program we will set up courses related to jazz, such as improvisation in chords, development of improvisational motives, application of jazz chords, mastery of jazz rhythms, and we will pick some practical jazz works to analyze with everyone playing.

For this program we will also set up a Jazz Band group. We will select some moderately difficult jazz standard pieces. Participants will get band rehearsal and solo training courses. We will divide the students into different small band groups for the training, and reorganize and imitate different jazz works of different styles, as well as the playing methods of different musical instruments in the band. We will also conduct some targeted rehearsal courses for different musical instruments in the band's improvisational thinking, as well as development and processing. The Jazz Band rehearsal course will be jointly completed with students and teachers who come to participate in I-AME Master Classes.

The program's main coordinators and leaders are Cooper Shuwei Yuan – Guitar, Alexander Christianov – Piano, Joaquim de la Cuesta – Double Bass and Bass Guitar, Tristan Michael Willems – Winds, and others.







# Passive Participation

600 €

ARE YOU A PARENT OF YOUNG MUSICIAN OR MUSIC  
LOVER AND DO YOU WANT TO EXPERIENCE  
THE ATMOSPHERE AT FIRST HAND?

Enjoy Magic Prague when you accompany your child (or partner). Passive participants can attend solo and group lessons, concerts and other organized events. The price includes accommodation with breakfast in the dormitory, lunches and joint events from Friday, July 11 to Sunday, July 20, 2025 (accommodation until July 21). In the case you need to know more information, do not hesitate to contact us in person.



# WHAT IS INCLUDED IN PROGRAMME PRICE?

10-day stay, from **July 11 to July 20, 2025.**

**Individual lessons** with an instructor – daily 60 minutes (45 minutes for the Youth Program participants).

Playing in a **chamber ensemble** (or possibly two) – each 60 minutes. The repertoire will be agreed upon and sheet music sent in advance.

Playing in an **orchestra** – daily 90 minutes, sheet music provided.

For participants in the jazz program **Big Band.**

For participants in singing, harp, and piano: **choral singing.**

Rehearsals with **piano accompaniment** in case of concert performance.

**Concerts** by instructors, guests, and participants.

Two **concert marathons** in Tloskov and in the Monastery of St. Agnes of Bohemia.

**Art program** for participants of the Youth Program.

Option to choose a **second instrument** (shorter lesson) for an additional fee.

**Transportation** for concerts outside Prague – concert in Tloskov included.

**Lunches** and opening dinner included in the tuition fee.

**Snacks** and **dinners** for children under 14 staying in accommodation, who attend I-AME unaccompanied.

**Accommodation** in a university dormitory with breakfast will be provided upon registration and is paid separately.

Optionally, you can take a **guided tour** of Prague or arrange **transportation** to and from the airport/railway or bus station.

«««« [For application click here](#) »»»»

- 50 €

Reduction:  
50 € discount will be provided for repeated participation in I-AME. Please be sure to fill the years you have participated in the past.

## Our payment policy

A portion of the price for the courses is an application fee of 50€, which is payable upon filling out the detailed application form. By completing the application form and paying the non-refundable fee, your admittance to I-AME is secured.

A minimum deposit of half the price of the courses is due during the month of May. The course must be paid in full by June 15, 2025.

Cancellation of participation is possible until May 31st and then only for urgent reasons, which must be notified in writing. The deposit already paid will be returned excluding the non-refundable application fee.

Cancellation of participation after May 31st is only possible for health reasons. Documentation is required as proof of withdrawal from the course. The participant is obliged to pay 20% of the tuition fee in addition to already paid advances for accommodation, meals, advances to teachers and administrative expenses.

I-AME undertakes to carry out the courses. I-AME can cancel them only for objective reasons. You will be informed about the reason for the cancellation immediately. In this case, the amount already paid (excluding the participation fee) will be refunded.

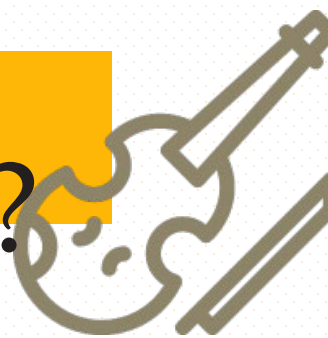
All details and account number are listed in USERAREA where you can book accommodation, optional activities and send payment.

Reduction:  
60 € discount will be provided for second and next registered sibling - active participation.

- 60 €

# WHITH WHOM WILL YOU STUDY?

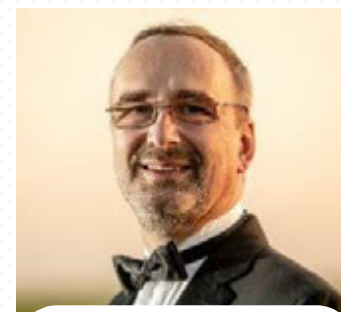
<https://i-ame.org/artists-en/>



Petr Maceček  
Violin



Petr Bernášek  
Violin



Rudolf Sternadel  
Violin



Daniel Glineur  
Violin



Ada Slivanská  
Violin



Ann Marie Pocklembo  
Violin, Viola



Věra Binarová  
Viola



Ondřej Štochl  
Alto



Petr Šporcl  
Cello



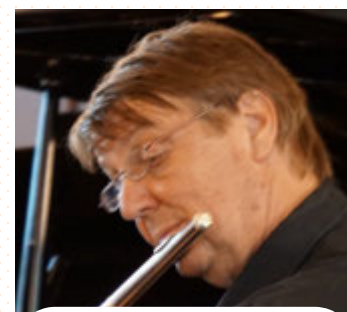
Dora Hájková  
Cello



Tomáš Stražil  
Cello



Joaquín de la Cuesta  
Double bas, Bass guitar



Václav Slivanský  
Flute



Elisabeth Möst  
Flute



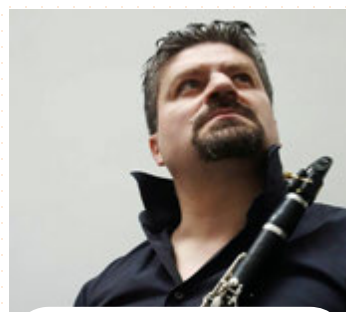
Martina Bernášková  
Flute



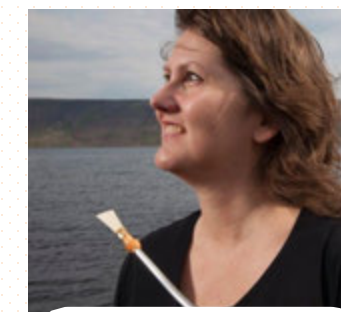
Johanna Pennington  
Oboe



Miloslav Tengler  
Clarinet, Saxophon



Sancho Sánchez Gil  
Clarinet



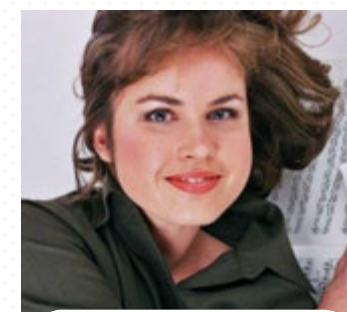
Kristín Möll Jakobsdóttir  
Bassoon



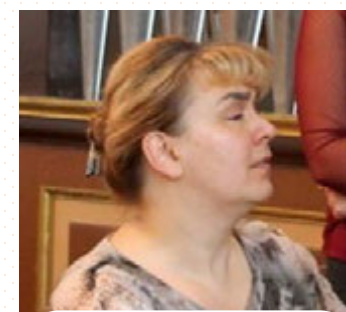
Steven Gross  
French Horn



Joseph Ognibene  
French Horn, Brass



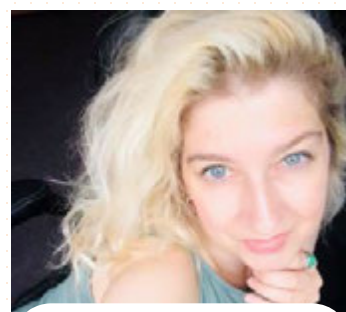
Eliška Novotná  
Piano



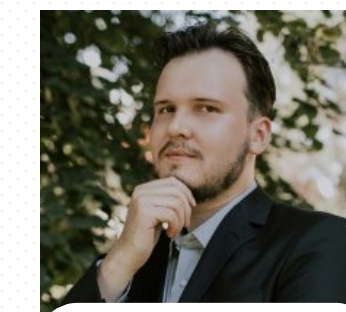
Jana Vondráčková  
Piano



Alexander Christianov  
Piano, Composition



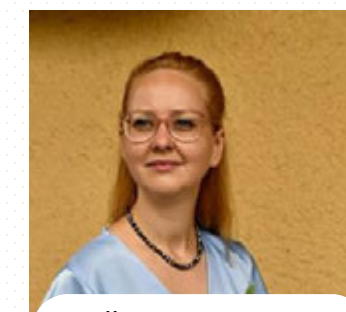
Elen Kiral  
Piano, Composition



Viktor V. Velát  
Piano accompaniment



Marie Vítová  
Piano accompaniment



Šárka Janíková  
Piano accompaniment



Ana Brateljevic  
Harp, Piano



Matti Saaren  
Guitare jazz, Classique



Shuwei Cooper Yuan  
Jazz guitar



Ayane Kondo  
Percussion



Pavlína Senič  
Vocal



Tsutomu Masuko  
Vocal



Tristan Michael Willems  
Conductor, Composition



Viktori Rampal Dzurenko  
Art Program

# Personnel, Teaching, Faculty

**Věra Binarová** – Artistic Director

**Ada Slivanská** – Executive Director

**Office Director:** Hana Kadlecová

**Flute:** Martina Bernášková (& recorder), Elisabeth Möst (*Austria*), Václav Slivanský

**Oboe:** Johanna Pennington (*USA*)

**Clarinet:** Sancho Sanches Gil (*Spain*), Miloslav Tengler (& recorder, saxophone)

**Bassoon:** Kristín Jakobsdóttir (*Iceland*)

**French Horn:** Joseph Ognibene (& trompette, trombone, *Iceland*), Steven Gross (*USA*)

**Violin:** Petr Maceček, Petr Bernášek, Ann Marie Pocklembo (& jazz violin, *USA*), Ada Slivanská, Daniel Glineur (*Belgium*), Rudolf Sternadel (*Canada*)

**Viola:** Věra Binarová, Ondřej Štochl

**Cello:** Dora Hájková, Petr Šporcl, Tomáš Stražil

**Double Bass:** Joaquim de la Cuesta (& bass guitar, jazz program, orchestra and choir conducting, *Spain, Iceland*)

**Harp:** Ana Bratelevic

**Guitar:** Matti Saarinen (& guitare jazz, *Finland*), Cooper Shuwei Yuan (Guitare jazz, *China*)

**Piano, Piano Accompaniment:** Eliška Novotná, Jana Vondráčková, Viktor V. Velát, Alexander Christianov (& jazz, composition), Marie Vítová, Šárka Janíková, Elena Kiral (& composition)

**Vocal:** Pavlína Senič, Tsutomu Masuko (*Japan*)

**Drums:** Ayane Kondo (*Japan*)

**Orchestra Conducting, Conducting Fundamental:** Tristan Willems (*USA*)

**Art Program:** Viktorie Rampal Dzurenko

**Children's Service:** under discussion, Stela Bendíková, David Hlaváček



# Solo Lessons



# Chamber Music





# Orchestra



## Chamber Music Ensembles

Students will participate in some form of chamber music. Depending on their age and level of playing, one can choose between a more or less intensive program. Most players are placed in more than one ensemble (string quartet, quintet, sextet; piano duo, trio, quartet, quintet; woodwind quintet; mixed ensembles with strings, winds, piano, harp, even including vocal).

It is essential that the participants are adequately technically equipped for chamber playing. In the application and in the “User area” you will find the boxes of the basic division according to the interpretation group and artistic maturity. Please pay attention to this section. Your satisfaction with the courses depends on the completion of this information. If it is necessary, consult with your teacher or an I-AME faculty member. To participate, include information about your experience with chamber music. Also, you are requested to send us a digital recording of your playing. You can send a link or paste sample of your play into the “Userarea” section before May 15, 2025. You will be transferred to this page just after applying for the courses.

For your information, we provide a basic division into groups:

1. Elementary / Beginner  
*basic level, no chamber music experience*
2. Pre-intermediate / Slightly advanced  
*some chamber music experience*
2. Intermediate / Middle level  
*e.g. high school*
4. Advanced  
*e.g. University*
5. Superior / Masterly  
*e.g. university & masters programs, professional*

You will be informed about chamber ensemble you are decide to play. You are responsible to study and bring your music part.

## Solo Classes

### **Solo lessons – one instrument**

Do you wish to devote yourself fully to your instrument and to enjoy one-hour lessons with your teacher every day of the week? Choose one instrument. You can choose with whom you would like to study and we will try to give you this opportunity. In your free time you may attend the lessons given by any teacher. You will also play in a chamber ensemble and you will perform with the prepared repertory at the concert, if your teacher suggest. We assume that you will spend your leisure time practicing and exercising on your instrument, to be able to improve in time for your next lesson.

### **Solo lessons – two instruments**

Do you play two instruments and want to devote and pay attention to both of them? Decide which of them is the main one, and which is the second one – you’ll have a 30-minute lesson for each. The tuition will be slightly increased for this option. You’ll play in a chamber ensemble and perform at the concert with some piece. It will be required that you spend your free time by practicing, as we will require you to be prepared.

### **Piano accompaniment parts**

All music for accompaniment you have to bring with you, that is a possibility you will play in a concert or master class.

## Youth and Creative Program

### **Youth and Creative program**

This program is designed for all children of the music camp younger than 14 years. Solo lessons will be shortened to 45 minutes, to be able to manage the fine art and/or creative program. During the creative program they will enjoy a lot of fun and they will create together an absolutely unique concert performance.





# CHAMBER MUSIC INTENSIVE PROGRAM

The players who are most experienced in chamber music are encouraged to participate in the Intensive Program (no extra payments needed). They receive more coaching and rehearse several hours to really develop their ensemble skills and get to know the music very intimately. We recommend to concentrate on one work and to bring it to its highest level. Sometimes a group learns more than one work, but usually they learn a good part of each and do not complete both. There are performance opportunities. Members of the Intensive Program are encouraged to only participate in that program, in order to maximize their rehearsal and practice time for the ensemble.

The best option for intensive ensembles is to arrive as a preformatted group (even if they have gathered for this festival). Participants who know each other well and can collaborate well together usually have the greatest benefit from this program. Otherwise, one can request in the application to be placed in an intensive program, and we will place him/her only if we can find a very good match. Sometimes we create an ensemble that includes faculty members (often for one movement).

Send us a link or recording of 2 movements of contrasting styles, from different works, and different composers (one movement each). Audio or video recordings must be sent in electronic form – uploaded video into I-AME [USERAREA](#).

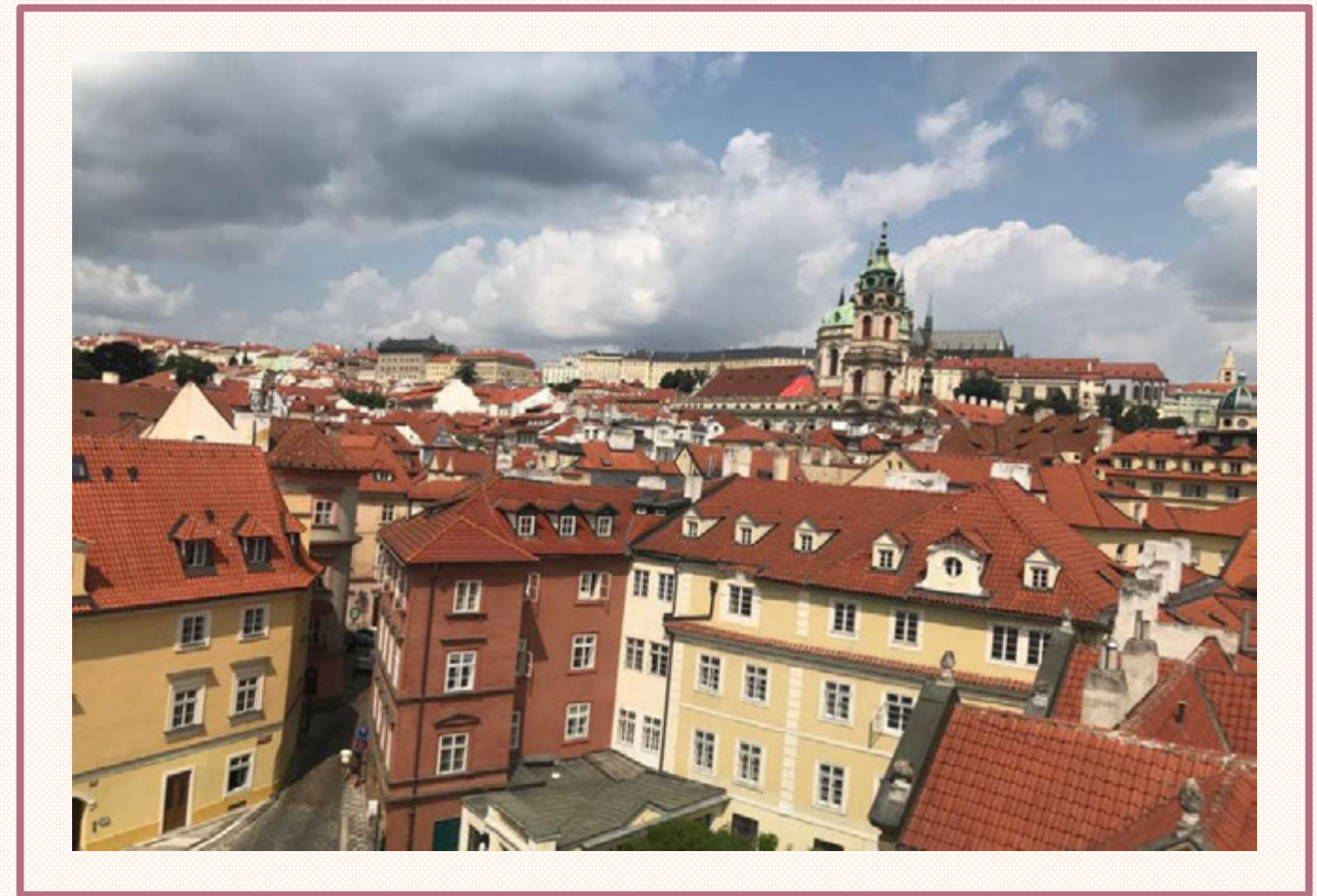
# I-AME Art Program painting and drawing

Czech, Slovak origin, painter cooperating in this program is Viktoria Rampal Dzurenko. She will work mostly with Czech children. Foreign students will be accepted in case there will be free spots.



# WHERE WILL YOU PERFORM?





C  
O  
N  
T  
A  
C  
T

.... Music but also visual arts, all this is offered by I-AME, International Summer Music Academy in Prague. Let music penetrate our hearts and let's create together. We will meet in an inspiring environment in a spacious elementary art school near Prague Castle. We will have unforgettable experiences together in a friendly atmosphere, many inspiring meetings with interesting people and many beautiful concerts. We have prepared a varied programmer under the guidance of top solo and chamber players and teachers. We offer a very specific connection between the world of professional musicians and the participants of the academy, who are only involved in music at an amateur level. Thanks to the magical power of music, these two worlds can be brought together. The academy also includes an artistic and creative program for younger participants. In conclusion, I will use a quote by Hans Christian Andersen that sums up everything "Where words fail, music speaks"...

I look forward to seeing you, Věra Binarová



**I-AME z. s.** IČO 269 87 546  
International Association for Music Education  
Předměřice nad Jizerou 85  
294 74 Czech Republic

Věra Binarová – Artistic Director  
[vera.binarova@i-ame.org](mailto:vera.binarova@i-ame.org)  
Ada Slivanská – Executive Director  
[ada@i-ame.org](mailto:ada@i-ame.org), [info@i-ame.org](mailto:info@i-ame.org)

Hana Kadlecová – Office Director  
[hana.kadlecova@i-ame.org](mailto:hana.kadlecova@i-ame.org)  
PHONE +420 608 332 830  
+420 245 001 711