

**I-AME**  
Magic Music in Magic Prague  
[www.i-ame.org](http://www.i-ame.org)



**I-AME**

INTERNATIONAL PARTICIPATION OF TOP ARTISTS  
SOLO CLASSES | CHAMBER MUSIC | YOUTH PROGRAM  
ORCHESTRA | JAZZ MUSIC | FINE ARTS



International Association for Music Education  
**Magical Music in Enchanting Prague**  
July 10 – 19, 2026

Czech Republic, Prague 6 - Břevnov, Jan Hanus Music School



# I-AME 2026

## About us



„UNITED IN MUSIC“

*“A Musical Journey into the Magic of Prague...”*

*The International Association for Music Education (I-AME) is an organization dedicated to providing the highest quality music education to students of all ages and abilities. We believe that everyone should have access to the joy of music, and our mission is to bring people from all over the world together to share in the experience. Our summer music events are designed to provide an immersive and inspiring experience for children, future professionals, and amateur musicians alike. Through our unique program, we strive to foster an appreciation and understanding of music, while also providing an opportunity to build relationships, express creativity, and hone skills. We look forward to welcoming you to our summer music events and helping you to reach your musical goals.*

The prices listed in Czech crowns are subsidized by sponsors, donors, and I-AME, and are valid for participants who reside permanently in the Czech Republic.



Věra Binarová  
Artistic director  
[vera.binarova@i-ame.org](mailto:vera.binarova@i-ame.org)



Ada Slivanská  
Executive director  
[ada@i-ame.org](mailto:ada@i-ame.org)

With the participation of Czech and world leading artists and educators, we organize a summer music academy for young artists and a music camp for children. We organize a summer festival featuring guests, educators and participants of the academy and camp. We are looking for emerging talented artists, which we present at concerts. Through creative music and art programs, we strengthen the personality and cultural development of the young generation.



The Summer Academy in Prague, Czech Republic “Magical Music in Enchanting Prague” is a unique educational opportunity to explore the rich cultural heritage of Prague and the Czech Republic, while learning about the history and development of music in the region. Students will take part in lectures, workshops, and performances focusing on music from all over the world. The program is open to all ages and adapted to the level of the enrolled students. Participants will have the opportunity to experience the city’s vibrant music scene, tour its iconic landmarks and monuments, and explore the many cultural attractions that make Prague so magical.

This year we will be in the heart of Prague, collaborating with the Music School of Jan Hanuš not far from Prague Castle. We will continue to nurture children’s love of music and help them develop their musical talents, with courses focused on improving their skills, training in chamber music, and performing in concerts in the beautiful concert halls and other venues in Prague.



# General Program Overview

We offer a unique, condensed study opportunity. Our artists will engage with you to discuss and review your chosen repertoire, assisting you in overcoming technical challenges. They will provide guidance on the techniques of your instrument and share their thoughts on the musical phrasing of your selected pieces. With piano accompaniment, you will have the chance to prepare for a concert performance.

Additionally, you will have the opportunity to collaborate with fellow students or teachers on interesting chamber music repertoire.

Playing with more advanced artists can be a truly transformative experience. You will learn from their expertise and gain insight into their creative process. You will also witness the passion and energy that goes into creating music.

Collaborating will broaden your appreciation for the power of teamwork, as you work together to create something unique and special. The collective energy of the group will inspire you to create something greater than the sum of its parts. Playing with artists can also challenge you to reach new heights, as you strive to achieve the same level of artistry as those you are playing with.

There are also several master-classes, workshops and lectures in the evenings, faculty and students' concerts.

Even though the schedule is very busy, one can find time to visit Prague, one of the most beautiful cities in the world, and enjoy being a tourist for a few hours.







# WHAT WILL YOU STUDY AT I-AME?



Individual solo lessons

---

Chamber music study and performance

---

I-AME Junior and Academy orchestra

---

Program for Young Musicians

---

Jazz / Classics / Improvisation

---

Piano accompaniment

---

Concerts of faculty and participants

---

Or join us as a passive participant

---



# I-AME Music Academy

The I-AME Music Academy is intended for advanced students and young professionals who wish to devote seriously to music. Our distinguished faculty share their experience through intensive individual tuition and chamber music coaching, with chamber music at the heart of the program. Playing in an ensemble will help you listen and respond to your colleagues, shape musical phrases together, and build lasting artistic friendships. Each participant receives at least seven individual lessons, with the opportunity to observe other students' lessons as well. Piano collaboration is provided as an integral part of your studies for participants selected to perform in concerts. The program is open to motivated participants of all ages – what matters most is your commitment to learning and your desire to take the next step toward your musical dreams.

1 400 €



1 200 €

## I-AME Youth Program

The I-AME Youth Program is designed for children and teenagers who love making music and want to enjoy it in a friendly, supportive summer environment, whether they plan a professional career. Participants have daily lessons, ensemble or chamber music sessions, and a varied leisure program. For children up to 14 years of age we provide full supervision throughout the day. Our experienced group leaders accompany them to lessons, meals and shared activities and help them prepare for their classes. Accommodation in a student dormitory is available at an additional cost and is not included in the program fee. Participants may also attend as day students without accommodation.



As part of the international I-AME courses, we offer a program for children aged 7–14 (born after August 1, 2012). Participation of a younger child must be discussed individually. The program promotes musical and cultural exchange by involving students from many countries. It is tailored to each child according to their musical level and technical experience. Students take part in a musical program including individual lessons, chamber music and ensemble playing, as well as the opportunity to be part of an orchestra. In addition, they can enjoy leisure activities, sports, and creative music and visual arts workshops.



YOUTH PROGRAM

Program  
for Young  
Musicians



# Jazz / Classics / Improvisation

## Guitar | Drums | Saxophone | Piano | Bass

1 400 €

The jazz / classical / improvising music program is an independent course for jazz players, as well as classical music students interested in jazz and impromptu music. For this program we will set up courses related to jazz, such as improvisation in chords, development of improvisational motives, application of jazz chords, mastery of jazz rhythms, and we will pick some practical jazz works to analyze with everyone playing.

For this program we will also set up a Jazz Band group. We will select some moderately difficult jazz standard pieces. Participants will get band rehearsal and solo training courses. We will divide the students into different small band groups for the training, and reorganize and imitate different jazz works of different styles, as well as the playing methods of different musical instruments in the band. We will also conduct some targeted rehearsal courses for different musical instruments in the band's improvisational thinking, as well as development and processing. The Jazz Band rehearsal course will be jointly completed with students and teachers who come to participate in I-AME Master Classes.

The program's main coordinators and leaders are Jakub Šefl – trumpet, Cooper Shuwei Yuan – Guitar, Joaquim de la Cuesta – Double Bass and Bass Guitar, Alexander Christianov – Piano, Tristan Michael Willems – Winds, and others.







ARE YOU A PARENT OF YOUNG MUSICIAN OR  
MUSIC LOVER AND WANT TO EXPERIENCE  
THE ATMOSPHERE FIRSTHAND?

# Passive Participation

600 €

Enjoy magical Prague while accompanying your child (or partner). Passive participants may attend solo and group lessons, concerts, and other organized events. The price includes lunches and joint activities. Accommodation with breakfast in the dormitory can be arranged. If you need more information, please do not hesitate to contact us.





# WHAT IS INCLUDED IN PROGRAMME PRICE?

10-day stay, from **July 10 to July 19, 2026.**

**Individual lessons** with an instructor – daily 60 minutes  
(45 minutes for the Youth Program participants).

Playing in a **chamber ensemble** (or possibly two) – each 60 minutes. The repertoire will be agreed upon and sheet music sent in advance.

Playing in an **orchestra** – 2 hours daily, sheet music provided.

For participants in the jazz program **Big Band**.

For participants in singing, harp, and piano: **choral singing**.

Rehearsals with **piano accompaniment** in case of concert performance.

**Concerts** by instructors, guests, and participants.

Two **concert marathons** in Tloskov and  
in the Monastery of St. Agnes of Bohemia.

**Art program** for participants of the Youth Program.

Option to choose a **second instrument** (shorter lesson) for an additional fee.

**Transportation** for concert outside Prague – concert in Tloskov included.

**Lunches** and opening dinner included in the tuition fee.

**Snacks** and **dinners** for children under 14 staying in accommodation,  
who attend I-AME unaccompanied.

**Accommodation** in a university dormitory with breakfast will be provided  
upon registration and is paid separately.

Optionally, you can take a **guided tour** of Prague or arrange  
**transportation** to and from the airport/railway or bus station.

«««« [For application click here](#) »»»»

Reduction:  
Returning participants of I-AME receive a €50 discount.  
Please indicate the year of your previous participation.

- 50 €

## Our payment policy

An **application fee** of €50 forms part of the course price and is payable when you complete the detailed **APPLICATION FORM**. Your place at I-AME is secured once the application form has been submitted and the non-refundable application fee has been paid.

A minimum **deposit** of 50% of the course fee is due in May. The course fee must be **paid in full** by June 15, 2026.

**Cancellation** of participation is possible until May 31. In this case, the amount already paid will be refunded, less the non-refundable application fee.

After May 31, cancellation is only possible for **serious health reasons**. Written documentation (e.g. a medical certificate) is required as proof of withdrawal from the course. In such cases, the participant is obliged to pay 20% of the tuition fee, in addition to any advances already paid for accommodation, meals, teacher fees and administrative costs.

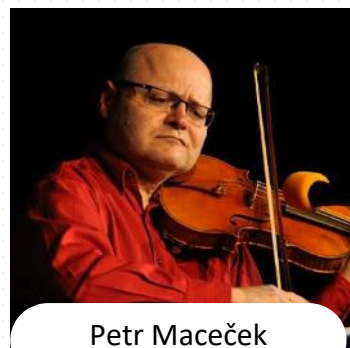
I-AME undertakes to carry out the courses as advertised. I-AME may **cancel the courses** only for serious and objective reasons. You will be informed of the reason for cancellation without delay. In such a case, all amounts already paid (excluding the non-refundable application fee) will be refunded.

All details and the account number are listed in I-AME **USERAREA**, where you can book accommodation, optional activities and make payments.

- 60 €

Reduction: 60 € discount will be provided for  
second and next registered sibling – active participation.





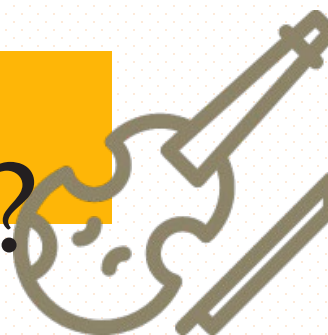
Petr Maceček  
Violin



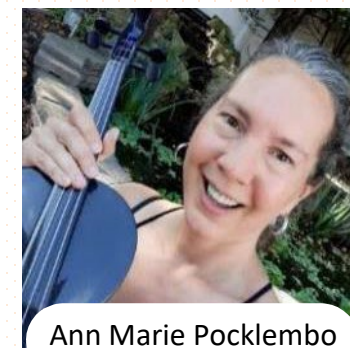
Petr Bernášek  
Violin

# WHITH WHOM WILL YOU STUDY?

<https://i-ame.org/artists-en/>



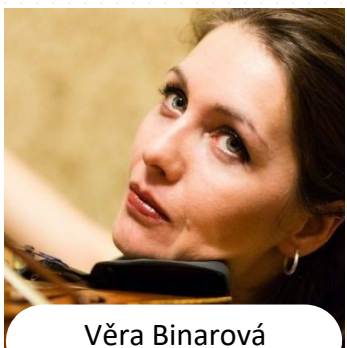
Daniel Glineur  
Violin



Ann Marie Pocklembo  
Violin, Viola



Ada Slivanská  
Violin



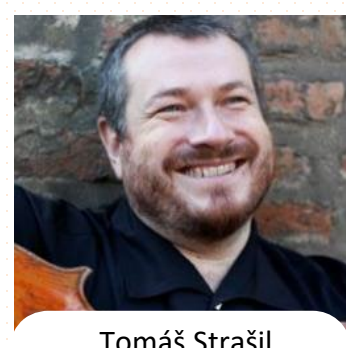
Věra Binarová  
Viola



Barbara Linke-Holická  
Viola



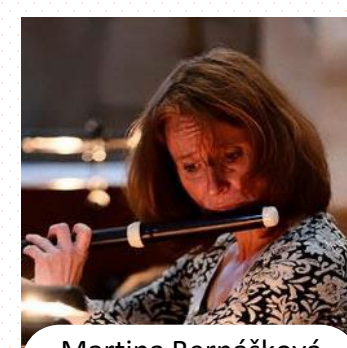
Petr Šporcl  
Cello



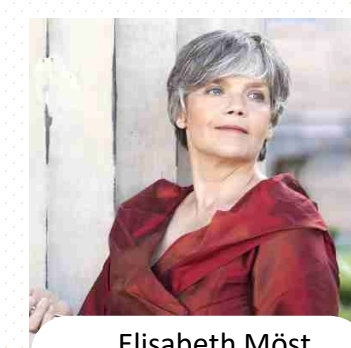
Tomáš Stražil  
Cello



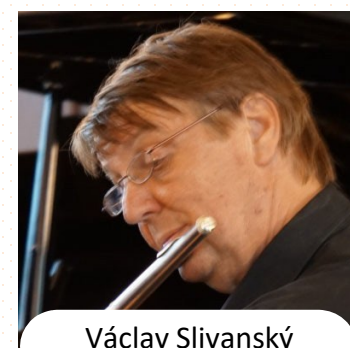
Joaquín de la Cuesta  
Double bass, Bass Guitar



Martina Bernášková  
Flute



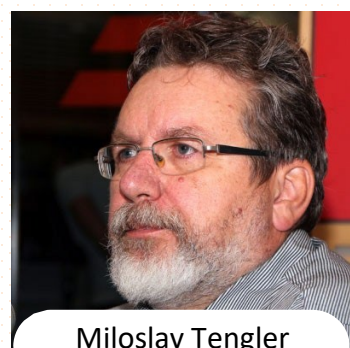
Elisabeth Möst  
Flute



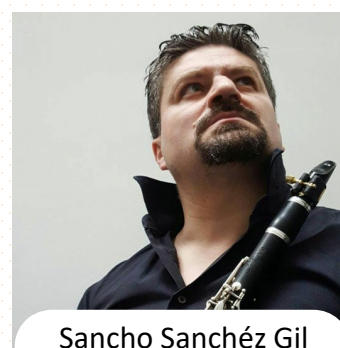
Václav Slivanský  
Flute



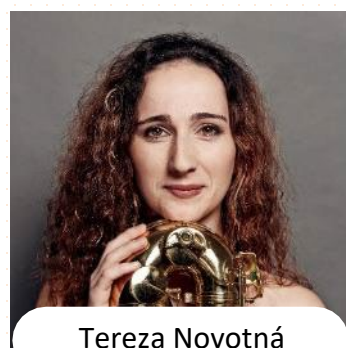
Johanna Pennington  
Oboe



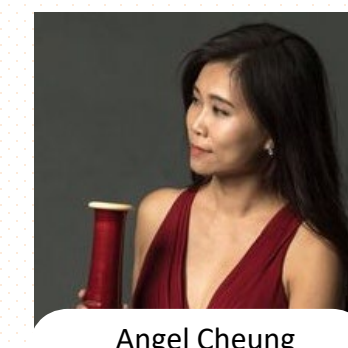
Miloslav Tengler  
Clarinet, Saxophone



Sancho Sánchez Gil  
Clarinet



Tereza Novotná  
Saxophone



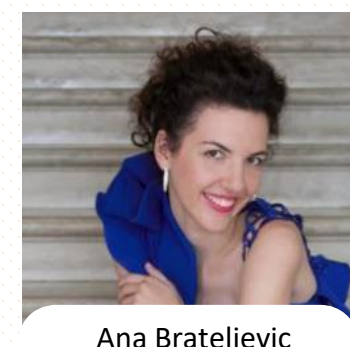
Angel Cheung  
Bassoon



Joseph Ognibene  
French Horn, Brass



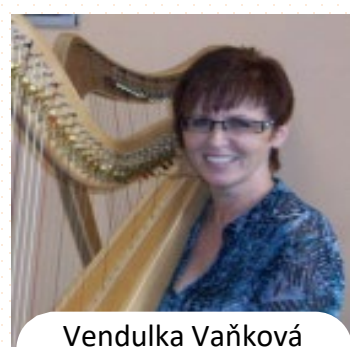
Jakub Šef  
Trumpet, Jazz



Ana Brateljevic  
Harp



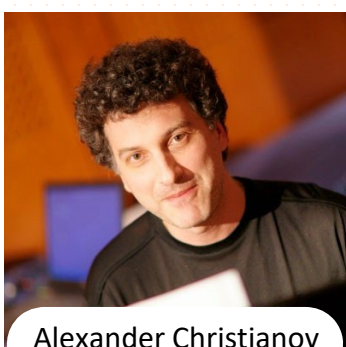
Pavla Jahodová  
Harp



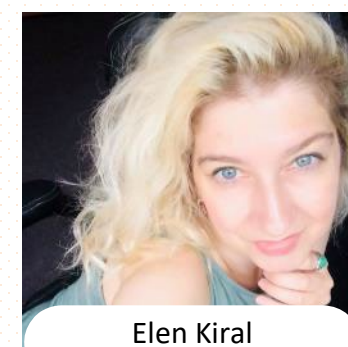
Vendulka Vaňková  
Harp



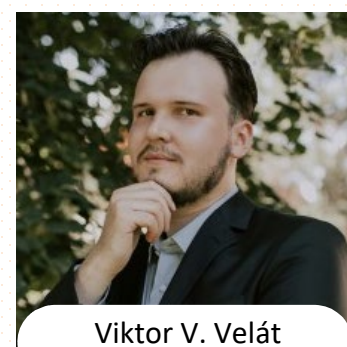
Jana Vondráčková  
Piano



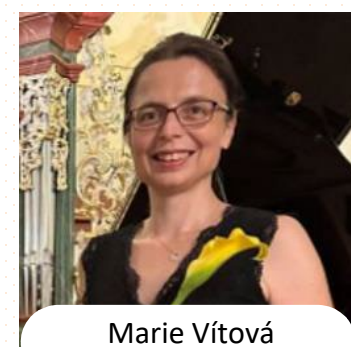
Alexander Christianov  
Piano, Composition



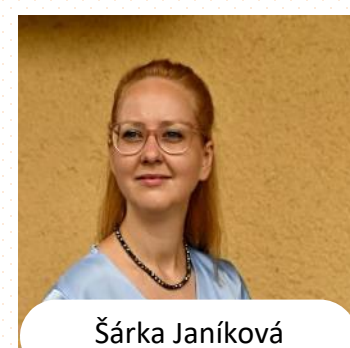
Elen Kiral  
Piano, Composition



Viktor V. Velát  
Piano accompaniment



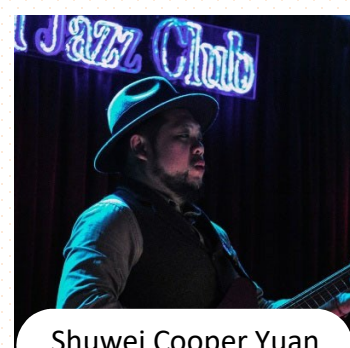
Marie Vítová  
Piano accompaniment



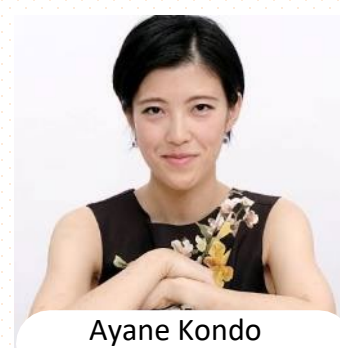
Šárka Janíková  
Piano accompaniment



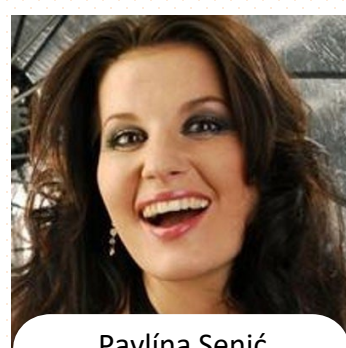
Matti Saarien  
Guitar



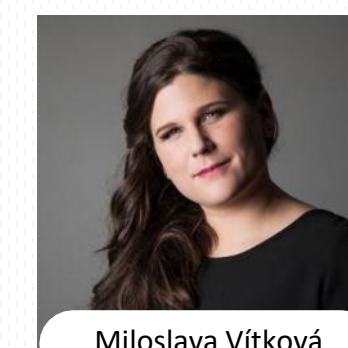
Shuwei Cooper Yuan  
Jazz Guitar



Ayane Kondo  
Percussion



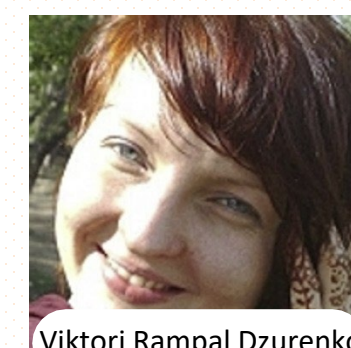
Pavlína Senič  
Vocal



Miloslava Vítková  
Vocal



Tristan Michael Willems  
Conductor, Composition



Viktori Rampal Dzurenko  
Art Program



# Personnel, Teaching, Faculty

**Věra Binarová** – Artistic Director

**Ada Slivanská** – Executive Director

**Karel Vrbík** – Marketing and Production Manager

**Hana Kadlecová** – Office Director

**Flute / Recorder:** Martina Bernášková, Elisabeth Möst (*Germany*), Václav Slivanský

**Oboe:** Johanna Pennington (*USA*), Haeun Seah An (*USA, Korea*)

**Clarinet / Saxophone:** Sancho Sanches Gil (*Spain*), Miloslav Tengler, Tereza Novotná

**Bassoon:** Angel Cheung (*HongKong*), Kristín Jakobsdóttir (*Iceland*)

**French Horn / Trompette / Trombone:** Joseph Ognibene (*Iceland*), Jakub Šefl

**Violin:** Petr Maceček, Petr Bernášek, Ann Marie Pocklembo (*USA*), Ada Slivanská, Daniel Glineur (*Belgium*)

**Viola:** Věra Binarová, Barbara Linke-Holická (*Czech Republic, Germany*)

**Cello:** Petr Šporcl, Tomáš Stražil

**Double Bass / Bass guitar:** Joaquim de la Cuesta (*Spain, Iceland*)

**Harp:** Ana Bratelevic, Pavla Jahodová Vondráčková, Vendulka Vaňková

**Guitar / Jazz Guitar:** Matti Saarinen (*Finland*), Cooper Shuwei Yuan (*China*)

**Piano / Piano Accompaniment / Composition:** Jana Vondráčková, Viktor V. Velát, Alexander Christianov, Marie Vítová, Šárka Janíková, Elena Kiral (*Kyrgyzstan, Czech Republic*)

**Vocal:** Pavlína Senič, Miloslava Vítková

**Percussion:** Ayane Kondo (*Japan, Germany*)

**Orchestra Conducting / Conducting Fundamental / Choir:** Tristan Willems (*USA, Iceland*), Joaquim de la Cuesta (*Spain, Iceland*)

**Art Program:** Viktorie Rampal Dzurenko

**Children's Service:** Soňa Bendíková, Alena Habětínková





# Solo Lessons





# Chamber Music







# Orchestra





# Chamber Music Ensembles

Students will participate in some form of chamber music. Depending on their age and level of playing, they can choose an intensive program.

Most players are placed in more than one ensemble (string quartet, quintet, sextet; piano duo, trio, quartet, quintet; woodwind quintet; mixed ensembles with strings, winds, piano, harp, and sometimes voice).

It is essential that participants are technically well prepared for chamber music. In the application form and in the “User Area” you will find fields indicating your main instrument group and approximate artistic level. Please complete this section carefully; your satisfaction with the course depends on the accuracy of this information. If necessary, consult your teacher or an I-AME faculty member.

When applying, please include information about your experience with chamber music and upload a digital recording of your playing. You can send us a link or paste the sample into the USERAREA section before May 15, 2026. You will be redirected to this page immediately after submitting your application.

For your information, we use the following basic division into groups:

1. *Elementary / Beginner – basic level, no chamber music experience*
2. *Pre-intermediate / Slightly advanced – some chamber music experience*
3. *Intermediate / Middle level – e.g. high school level*
4. *Advanced – e.g. university level*
5. *Superior / Master – e.g. master’s programs, professional level*

You will be informed about the chamber ensemble(s) you are assigned to. You are responsible for studying and bringing your music parts.

# Solo Classes

## **Solo lessons – one instrument**

Do you wish to devote yourself fully to your instrument and enjoy a one-hour lesson with your teacher every day of the week? Choose one instrument. You may indicate which teacher you would like to study with and we will do our best to accommodate your preference. In your free time you can attend lessons given by other teachers. You will also play in a chamber ensemble and, if your teacher suggests it, you will perform your prepared repertoire at the concert. We assume that you will spend your leisure time practising your instrument so that you can continue to improve from lesson to lesson.

## **Solo lessons – two instruments**

Do you play two instruments and want to devote serious attention to both? Decide which one will be your main instrument and which will be secondary – you will have a 30-minute lesson on each. The tuition fee will be slightly higher for this option. You will play in a chamber ensemble and perform a piece at the concert. You will be expected to spend your free time practising so that you are well prepared.

## **Piano accompaniment parts**

You must bring all sheet music for piano accompaniment with you in case you perform in a concert or master class.

# Youth and Creative Program

This program is intended for all children at the music camp younger than 14 years. Solo lessons are shortened to 45 minutes so that they can also take part in the visual arts and/or creative program. During the creative sessions they will have lots of fun and work together to create a truly unique concert performance.





# CHAMBER MUSIC INTENSIVE PROGRAM

The players who are most experienced in chamber music are encouraged to participate in the Intensive Program (no extra payment needed). They receive more coaching and rehearse for several hours a day to really develop their ensemble skills and get to know the music very intimately. We recommend focusing on one work and bringing it to the highest possible level. Sometimes a group studies more than one work, but usually they cover only a substantial part of each and do not complete both. There are performance opportunities.

The best option for intensive ensembles is to arrive as a pre-formed group (even if they have come together just for this festival). Participants who know each other well and collaborate effectively usually benefit the most from this program. Alternatively, you may request to join the Intensive Program in your application, and we will include you only if we can find a very good match. Sometimes we also create ensembles that include faculty members (often for one movement).

Please send us a link or recording of two movements in contrasting styles from different works and by different composers (one movement from each piece). Audio or video recordings must be uploaded electronically to the I-AME [USERAREA](#).



# I-AME

## Art Program

### painting and drawing

The art program is led by a Czech painter of Slovak origin, whose work is also influenced by Indian culture.

Viktoria Rampal Dzurenko will work mainly with Czech students. Foreign students will be accepted if there are free spots in the program.

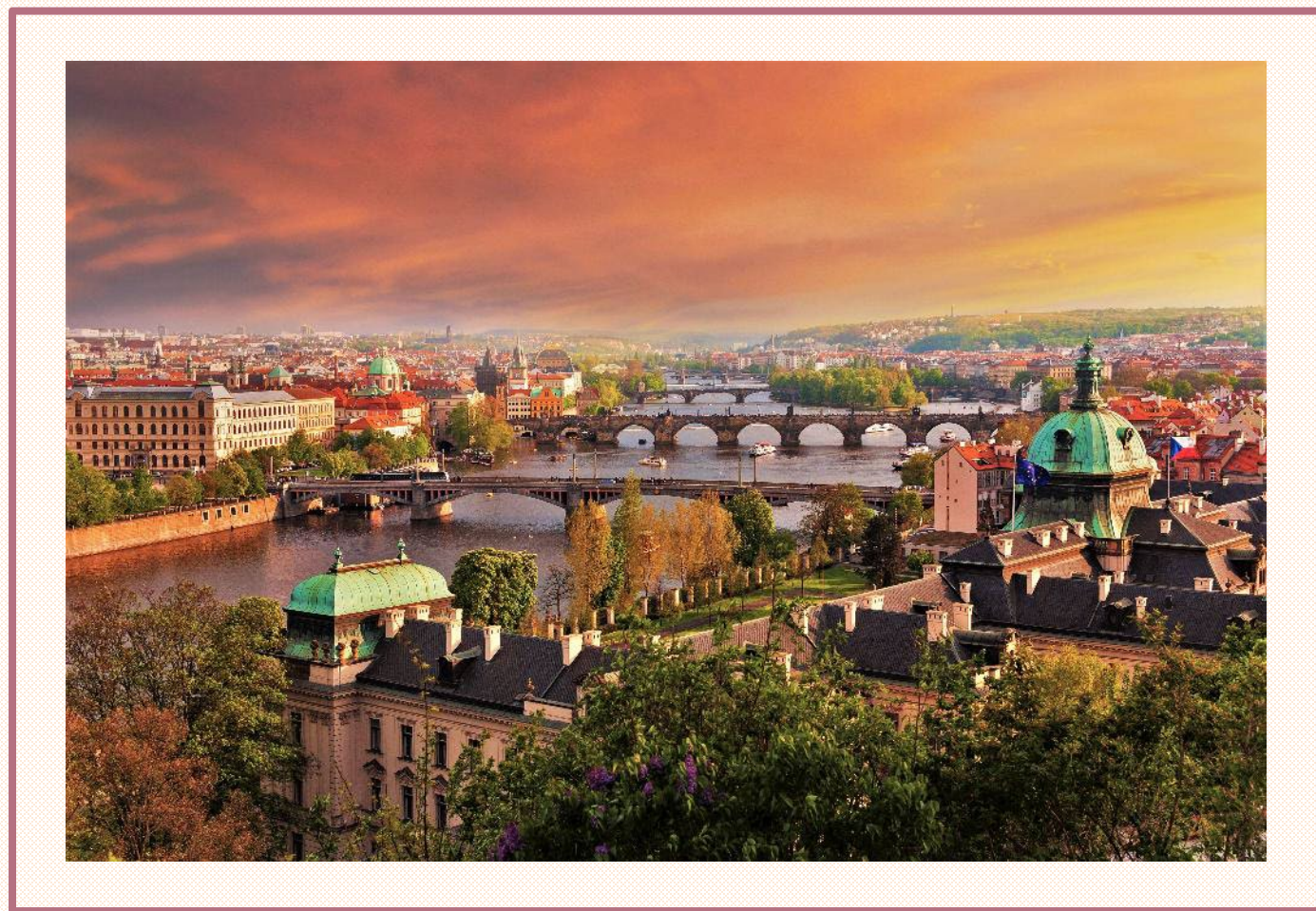




# WHERE WILL YOU PERFORM?









# C O N T A C T

*.... Music but also visual arts, all this is offered by I-AME, International Summer Music Academy in Prague. Let music penetrate our hearts and let's create together. We will meet in an inspiring environment in a spacious elementary art school near Prague Castle. We will have unforgettable experiences together in a friendly atmosphere, many inspiring meetings with interesting people and many beautiful concerts. We have prepared a varied program under the guidance of world class solo and chamber players as well as teachers. We offer a very specific connection between the world of professional musicians and the participants of the academy, who are only involved in music at an amateur level. Thanks to the magical power of music, these two worlds can be brought together. The academy also includes an artistic and creative program for younger participants. In conclusion, I will use a quote by Hans Christian Andersen that sums up everything "Where words fail, music speaks"...*

*I look forward to seeing you, Věra Binarová*



**I-AME z. s. IČO 269 87 546**  
International Association for Music Education  
Předměřice nad Jizerou 85  
294 74 Czech Republic

Věra Binarová – Artistic Director  
[vera.binarova@i-ame.org](mailto:vera.binarova@i-ame.org)  
Ada Slivanská – Executive Director, [ada@i-ame.org](mailto:ada@i-ame.org)  
+420 608 332 830, +420 245 001 711

Karel Vrbík – Marketing and Production Manager  
[Karel@i-ame.org](mailto:Karel@i-ame.org), +420 222 703 275  
Hana Kadlecová – Office Director  
[hana.kadlecova@i-ame.org](mailto:hana.kadlecova@i-ame.org), [info@i-ame.org](mailto:info@i-ame.org)